



Windows



IP65



GNSS/Glonass



Dual-battery



Fingerprint



Camera



2D (optional)



4G/5G



WIFI



Bluetooth

MILBOOK F40

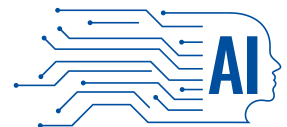
Performance

- Experience the all-new Intel® Core™ Ultra processor, built on Intel's 4 process technology and advanced 3D hybrid architecture
- Newly added NPU dedicated AI acceleration engine, with high-speed operation of local AI large language models and AI applications
- Standard 16+256 GB, with dual memory and dual storage slots allow for easy upgrades and expansion
- 14-inch ultra-large display with 1000 Nit peak brightness and glove touch support for outdoor scenes

Communication

- Wi-Fi 6 technology, offering high speed connections up to 2000 Mbps
- 4G communication with optional 5G, supports Sub-6 GHz Frequencies
- BT5.1, low-latency anti-interference, high-speed data transmission
- With the power of Thunderbolt 4, enjoy blazing speeds of up to 40 Gbps for faster and more stable data transfer

Product Six Views



AI Support

Features

- With a massive 56 Wh removable battery and a 14.4 Wh built-in battery
- Coupled with advanced performance optimization and a new fan cooling system
- Pre-installed self-developed control center software, can be customized key functions
- Optional 2D barcode scanning, supports expansion of customized PCIe cards

Reliability

- PC/GF material, lightweight and strong body, reinforced design is more sturdy
- IP65 dustproof and waterproof protection level, no fear of harsh environments
- Passed MIL-STD-810H military standard test, 1.22 m drop resis

Specification Parameter

Basic parameters	
Dimension	366.2 x 246.9 x 24.8 mm
Device Color	Black
LCD	14 inch LCD 16:9, 1920×1080, 1000 nits
Touch Panel	10 point G+G capacitive touch screen
Camera	Front 5.0MP Rear 13.0MP
I/O Interfaces	USB 3.2 x1, USB 3.0 x1, USB2.0 x1 Type-C x1, Supports Thunderbolt 4 SIM card x1, TF card x 1, HDMI 2.0 Mini x1 RJ45 x1 10M/100M/1000Madaptive Supports Gigabit Protocol RJ45 x1 10M/100M/1000Madaptive RS232 x1, 9 fully functional lines Φ 3.5mm Standard Earphone Jack x1 DC 19V 4.73A Φ5.5mm Power port x1 12PIN Pogo Pin (USB & Charging) x1
Power	100~240V Input 19V4.73A/90W CE Certified, European Standard
NFC	Built in, USB interface, supports protocols ISO14443A, ISO14443B, IOS15693, ISO18092, Felica
Fingerprint	Standard
2D	Optional Optical Resolution (Scanning Accuracy): ≥3mil
Battery	
RTC	3.0V/220MAH
Big Battery	Removable Polymer Lithium-ion Battery, Hot-swappable 4850 mAh/11.55V, 56 Wh
Endurance	Built-in Polymer Lithium-ion Battery, Non-removable 1300 mAh/11.1V, 14.4 Wh

Performance parameter	
CPU	Intel® Core™ Ultra 5 processor 125H Optional: Intel® Core™ Ultra 7 processor 155H
OS	Windows 11/10
RAM	16 GB, optional 32 GB
Storage	256/512/1024 GB

Communication	
WIFI	AX200 bands: Supports Wi-Fi 6 802.11 (a/b/d/e/g/h/i/k/n/r/u/v/w/ac/ax) Frequency: 2.4G+5.8G Dual-band WIFI
Bluetooth	BT5.1(BLE)
4G	LTE-FDD: B1/B3/B5/B8 LTE-TDD: B34/B38/B39/B40/B41 WCDMA: B1/8 Optional MeiG North and South America module
5G	Optional 5G NSA n1/2/3/5/7/8/12/13/14/18/20/25/26/28/29/30/38 /40/41/48/66/70/71/75/76/77/78/79 SA n1/2/3/5/7/8/12/13/14/18/20/25/26/28/29/30/38/40 /41/48/66/70/71/75/ 76/77/78/79 LTE LTE-FDD B1/2/3/4/5/7/8/12/13/14/17/18/19/20/25/26 /28/29/30/32/66/71 LTE-TDD B34/38/39/40/41/42/43/48
GNSS	Support single GPS/single glonass, default GPS Optionl modules, support GPS, Beidou, glonass

Reliability	
Working temperature	-20 °C to 60 °C
Storage temperature	-30 °C to 70 °C
Humidity	95% Non-Condensing
Rugged Feature	IP65 certified, MIL-STD-810H certified
Drop Height	1.22 m drop resistance

Internal Expansion Slot	
Optional	Optional: M.2-2280 PCIe interface x1, Supports SSD Optional: M.2 E-Key interface x1, for custom modules

Application Range

Various modules and accessories can be selected to meet customers' application in various industries.



Industrial manufacturing



Vehicle diagnostics



Medical field



Public security